



Department of Psychology
MICHIGAN STATE UNIVERSITY

PSY UGRAD NEWSLETTER

October 1, 2025



**PSYCH
FEST!**

The All-in-One Fair
for PSY Spartans

WED, OCTOBER 15, 3-5 PM, MUNN ICE ARENA

PSYCHFest is back!

For the first time since before the pandemic, we're bringing together opportunities, resources, and connections for psychology majors – all in one exciting fair.

This event is for every PSY Spartan, from first-years curious about getting involved to seniors preparing for their next steps. Explore internships, study abroad, research, student orgs, grad school options, campus resources, and more – all in one spot!

Oh, and did we mention there's swag?

We can't wait to see you!

IMPORTANT DATES

October 13 PSY Freshmen Refresh

October 13 Last day to drop with no grade reported

October 20 & 21 Fall Break – No Classes, University Open

October 27 Spring Enrollment Appointments begin

November 27 & 28 Holiday – University Closed




Meet with an Advisor


Schedule a **30-minute advising appointment**.

Virtual Drop-In Advising
Monday–Friday, 1–3pm EST


Stay connected


 psychology.msu.edu

 [Fall Events Calendar](#)


 [@msu_psyugrad](#)

Contact Us

 (517) 353-7271

 psyugrad@msu.edu

 [Psychology Bldg # 100](#)

 [Virtual Office \(Zoom\)](#)
Meeting ID: 974 4217 5358
Passcode: psyugrad

PSY SPEED FRIENDING

TUE, OCTOBER 7, 5-6:30PM, PSY 230

Do you have enough PSY friends? (Trick question: you can never have too many!)

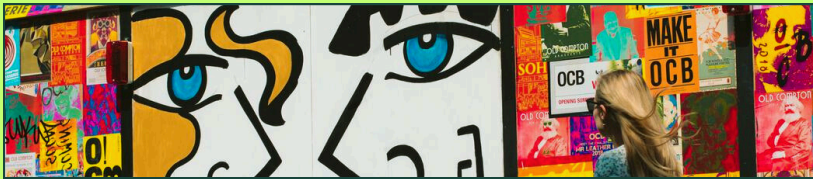
The PSY Student Success Mentors are hosting PSY Speed Friending, and it's exactly what it sounds like—fast chats, fun energy, and new friendships with people in your major. Whether you're brand new to PSY or nearing graduation, this is your chance to expand your circle and strengthen our community.

How you spend your summers can open doors long after graduation!

The PSY Summer Experiences Student Panel will showcase Spartans who took advantage of research, internships, and volunteer opportunities to grow their skills, expand their networks, and add impressive experiences to their CVs and resumes. You'll hear their stories, discover how they found opportunities, and get tips for navigating your own summer plans. Even though this panel is part of our Grad School Series, the advice is relevant to every student! [Register here](#) for reminders!

PSYCHOLOGY SUMMER EXPERIENCES STUDENT PANEL

TH, OCTOBER 9, 3:30-4:30PM, SNYDER C203



TUE, OCTOBER 14, 4:30-5:30PM, SNYDER C203

The Gender, Sex, and Feminism in London Education Abroad Program is going to be hosting an information session for those who are interested. The program dates for 2026 are June 29 - July 21. Details on the program can be found [here](#).

9.18-11.19

FALL 2025

@MSU_PSYUGRAD

PSY GRAD SCHOOL SERIES

[REGISTER WITH YOUR MSU EMAIL](#)

PSY EXPERIENTIAL LEARNING

Fall 2025 Zoom Series

[REGISTER WITH YOUR MSU EMAIL](#)

Career Services Network

[CAREER WORKSHOPS](#)

[CAREER FAIRS SCHEDULE](#)



PRE-HEALTH ESSENTIALS INFORMATION SESSIONS

[REGISTER WITH YOUR MSU EMAIL](#)

REMINDERS

Fall Graduating Seniors: remember to complete the online graduation application form ASAP. The Graduation Application is now available at student.msu.edu.

- After clicking on the Academic Progress tile, click on 'Graduation' on the left-hand navigation. Then click 'Apply for Graduation.'
- Fall25 graduates: be sure to register to participate in commencement (graduation ceremony), [here](#).
- Undergraduates can also view the GPA thresholds required for achieving graduation honors by term on the [Graduation Honors page](#).



**FALL 25 & SPRING 26 SENIORS:
APPLY TO GRADUATE!**

Spring 2026 seniors: you can also start the process of applying for graduation via SIS. Save yourself the stress and apply today! Any issues? Reach out to our general email account (psyugrad@msu.edu).



HUMAN SERVICES INTERNSHIP

Now accepting applications for the Human Service Internship (Spring/Summer 2026)! Students take PSY 381 in spring to build direct service skills, then PSY 382 in summer with an approved internship. This two-semester sequence is ideal for those pursuing careers working with people in need.

View [additional details](#) and [apply here](#).

RESOURCES



[KEY CAMPUS RESOURCES](#)



[ACADEMIC SUCCESS WORKSHOPS](#)



**PSY
STUDENT
SUCCESS
MENTORS**

SUPPORT HOURS

MONDAYS	10AM-6PM
TUESDAYS	10AM-2PM
WEDNESDAYS	10AM-6PM
THURSDAYS	10AM-7PM
FRIDAYS	10AM-3PM

**GILTNER
ROOM 348**